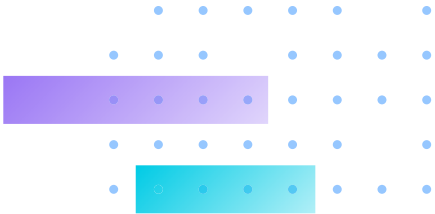


VIVOCAM L2 Series

VIVOCAM L2 Managed PoE Switch

- Topology View, Floor View, Map View
- Traffic Monitor
- Device List
- DHCP Server
- Non-Stop PoE
- 802.3 af/at/bt Hybrid, bt PoE Port Max. 90W
- Extended PoE Mode up to 250M





Highlight Features

Devices List

Auto-refresh

Show entries

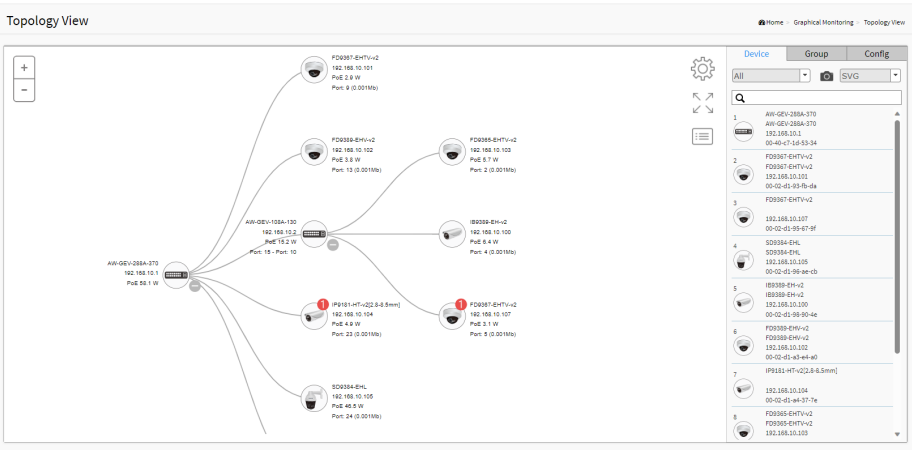
Remove	Status	Device Type	Model Name	Device Name	MAC	IP Address
<input type="checkbox"/>	Online	IP Camera	FE8174	Mega-Pixel Network Camera	00-02-D1-2A-51-2B	192.168.40.80
<input type="checkbox"/>	Online	IP Camera	FD8154V	Mega-Pixel Network Camera	00-02-D1-30-D6-4E	192.168.40.83
<input type="checkbox"/>	Online	IP Camera	IP8364	Mega-Pixel Network Camera	00-02-D1-22-97-35	192.168.40.85
<input type="checkbox"/>	Online	IP Camera	FD8182-F2	Mega-Pixel Network Camera	00-02-D1-38-F3-8D	192.168.40.86
<input type="checkbox"/>	Online	IP Camera	FD8362E	Mega-Pixel Network Camera	00-02-D1-21-29-05	192.168.40.88
<input type="checkbox"/>	Online	IP Camera	IB8338-H	IB8338-H	00-02-D1-2F-99-81	192.168.40.89
<input type="checkbox"/>	Online	IP Camera	FD8173-H	Mega-Pixel Network Camer	00-02-D1-30-5B-9F	192.168.40.94
<input type="checkbox"/>	Online	IP Camera	CC8130	Mega-Pixel Network Camer	00-02-D1-1D-21-83	192.168.40.95
<input type="checkbox"/>	Online	IP Camera	IP8335H	Mega-Pixel Network Camera	00-02-D1-25-33-E7	192.168.40.96
<input type="checkbox"/>	Online	IP Camera	I29361-EH	I29361-EH	00-02-D1-43-E6-52	192.168.40.97

Showing 41 to 50 of 217 entries

Previous 1 ... 4 5 6 ... 22 Next

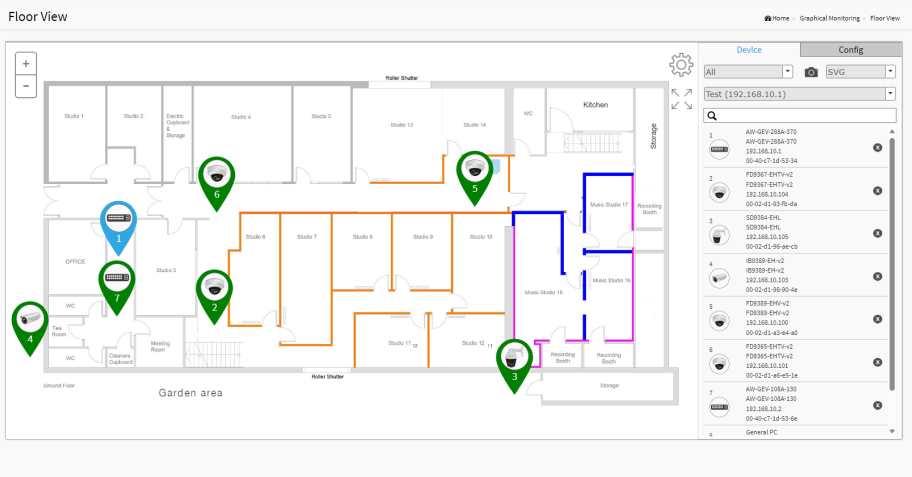
Auto Discovery

The VIVOCAM L2 series can automatically discover VIVOTEK's devices, such as network cameras, video servers, and NVRs, with a simple click of the mouse.



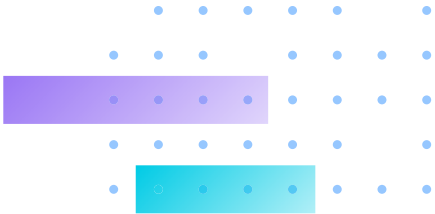
Topology View

Auto-generated Topology View allows administrators to quickly view and export a complete network topology in SVG/PNG/PDF format for easier inspection and planning.

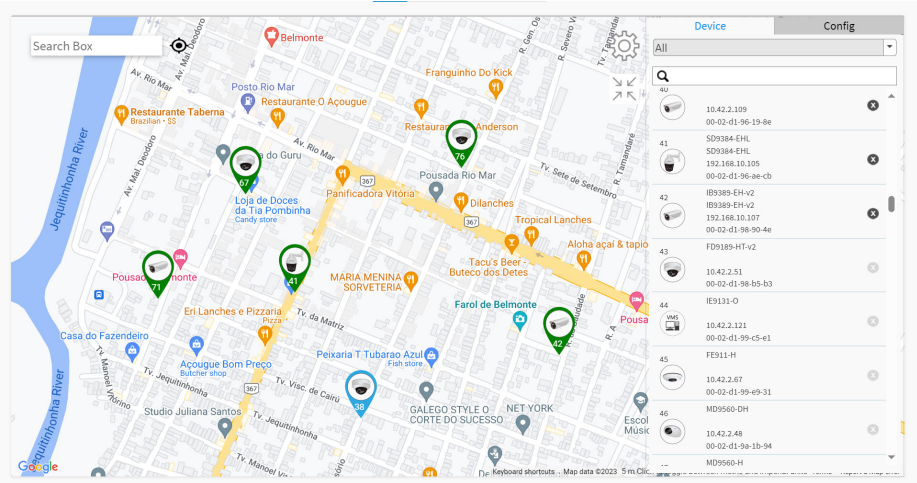


Floor View

Upload custom floor images. Floor View allows for quick location of deployed surveillance devices and exporting this view in SVG/PNG/PDF format for easier inspection and planning.



Highlight Features



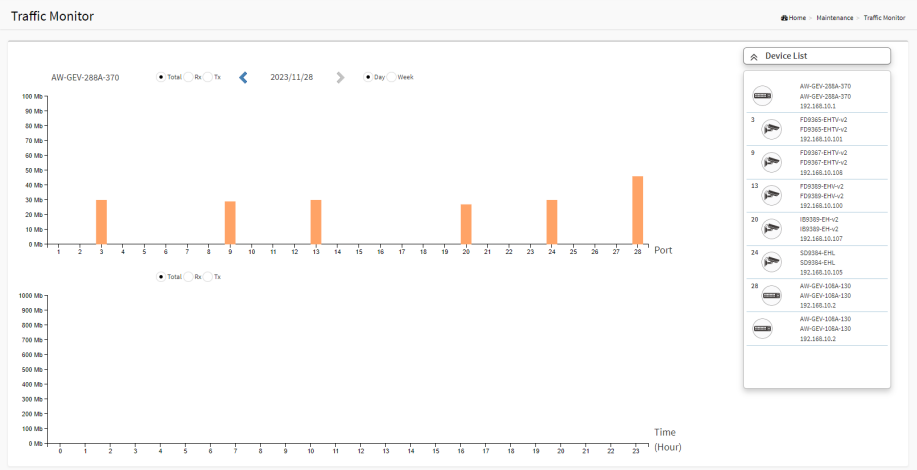
Google Map View

Locate surveillance devices on Google Maps to simplify multi-site management of any large-scale deployments.



Device Management

Easy network configuration, open camera Web UI, diagnose camera connection and cable status, display camera live stream, change camera network setting, restore default, PoE consumption, and PoE on/off control.



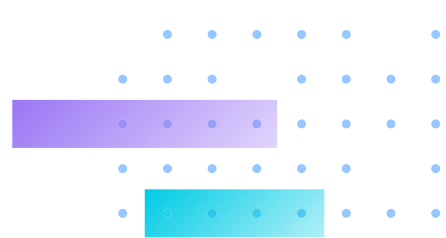
Traffic Monitor

An auto-generated comprehensive chart shows port-by-port network traffic status.

Technical Specifications



Model	AW-GEV-108A-130	AW-GEV-288A-370
Short Highlight	2xGbE bt 90W PoE + 6xGbE 30W PoE + 2xGbE Combo VIVOCAM L2 Managed PoE Switch	4xGbE bt 90W PoE + 20xGbE 30W PoE+ 4xGbE Combo VIVOCAM L2 Managed PoE Switch
Port Configuration		
Gigabit RJ45 Port	8	24
Gigabit Combo Port	2	4
Total Ports	10	28
Console Port	1	1
HW Performance		
Switching Bandwidth	20Gbps	56Gbps
Forwarding Capacity	14.88 Mpps	41.7Mpps
MAC Address	8K	8K
Jumbo Frames	9216 Bytes	9216 Bytes
Network		
IPv4/IPv6	V	V
Surveillance Features		
Network Device	up to 256 pcs	up to 256 pcs
PoE Reboot	V	V
Surveillance Device Management List	V	V
DHCP Server Function	V	V
VIVOTEK Device Account/Password Setting	V	V
VIVOTEK Device Grouping Setting for VLAN	V	V
VIVOTEK Device Name Edit	V	V
VIVOTEK Camera/Video Server Reboot/Restore Default	V	V
VIVOTEK Device Re-direct Link	V	V
VIVOTEK Device On/Off Line Status	V	V
E-Map View		
Topology View	V	V
Floor View	V	V
Google Map View	V	V
Maintenance		
VIVOTEK Camera/Video Server Configuration File Export/Import	V	V
Floor Image Management	V	V
Export Surveillance Management Device List	V	V
Cable Diagnostics	V	V
Traffic Monitoring	V	V



Technical Specifications

L2 Managed Features

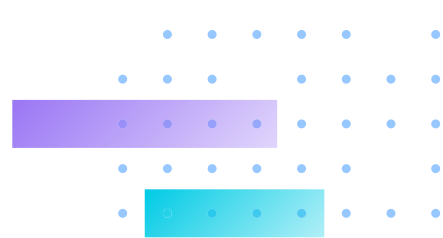
Spanning Tree	IEEE802.1D (STP)	V	V
	IEEE802.1w (RSTP)	V	V
	IEEE802.1s (MSTP)	V	V
Trunking	IEEE802.1d (LACP)	V	V
	Static Aggregation	V	V
VLAN	802.1Q Tag-based VLAN	4096 VLAN IDs	4096 VLAN IDs
	Port-based VLAN	V	V
	Private VLAN Edge (PVE)	V	V
	GARP VLAN	V	V
	Q-in-Q (Double Tag)	V	V
	Protocol-based VLAN	V	V
	MAC-based VLAN	V	V
	Voice VLAN	V	V
	IP Subnet-based VLAN	V	V
	Multicast VLAN Registration (MVR)	V	V
IGMP Snooping (v1/v2)	V	V	
DHCP Relay	V	V	
MLD v1/v2 Snooping	V	V	

QoS Features

Hardware Queues		8	8
Classification	Port Based	V	V
	802.1p	V	V
Rate Limiting	Ingress	V	V
	Egress	V	V
	Per Port	V	V
Priority Queue Scheduling	WRR	V	V
	DSCP & Class of Service	V	V

Security

IEEE802.1x	RADIUS Authentication	V	V
	IGMP-RADIUS Based	V	V
Secure Sockets Layer (SSL)		V	V
Port Security		V	V
IP Source Guard		V	V
Storm Control		V	V
Layer 2 Isolation Private VLAN Edge (PVE)		V	V
RADIUS/TACACS+		V	V
Loop Detection		V	V
DHCP Snooping		V	V
ACLs	Up to 384 Entries	4096 VLAN IDs	4096 VLAN IDs
	Source and Destination MAC, VLAN ID or IP Address, Protocol, Port (DSCP) / IP Precedence	V	V
	TCP/ UDP Source and Destination Ports	V	V
	802.1p Priority	V	V
	ICMP Packets	V	V
	Ethernet Type	V	V
	TCP Flag	V	V



Technical Specifications

Management

SNMP (v1, v2c, v3)	V	V
RMON (1,2,3 & 9 groups)	V	V
DHCP Server & Client	V	V
Port Mirroring	V	V
UPnP	V	V
LLDP (IEEE802.1ab)	V	V
LLDP-MED	V	V
S-Flow	V	V
Firmware Upgrade	V	V
NTP	V	V

PoE Management

PoE On/Off Control	V	V
PoE Alive Checking for PD	V	V
PoE Scheduling	V	V
Power Delay	V	V
Non-Stop PoE	V	V
Extended PoE Mode (up to 250m/10mbps)	V	V

PoE Function

IEEE 802.3af/at/bt PoE Standard Compliant	V	V
Number of PoE Output Port	8	24
PoE Output Power	Port 1-6 at 30W Port 7-8 bt 90W	Port 1-20 at 30W Port 21-24 bt 90W
Total PoE Power Budget	130W	370W
PoE Pin Assignment	Port 7-8 bt: 4 pairs 1/2 (-), 3/6 (+) and 4/5 (+), 7/8 (-) Port 1-6 af/at: 2 pairs 1/2 (+), 3/6 (-)	Port 21-24 bt: 4 pairs 1/2 (-), 3/6 (+) and 4/5 (+), 7/8 (-) Port 1-20 af/at: 2 pairs 1/2 (+), 3/6 (-)

Environmental Specifications

Operating Temperature	-10°C ~ 50°C (14°F ~ 122°F)	-10°C ~ 50°C (14°F ~ 122°F)
Storage Temperature	-20°C ~ 70°C (-4°F ~ 158°F)	-20°C ~ 70°C (-4°F ~ 158°F)
Operating Humidity	10 ~ 90% RH	10 ~ 90% RH

Mechanical Specifications

Dimensions	220 (W) x 44 (H) x 242 (D) mm	442 (W) x 44 (H) x 211(D) mm
Weight	1.95 kg	3.2 kg

Power Source

AC Input	100V ~ 240V	100V ~ 240V
Frequency	50 ~ 60 Hz	50 ~ 60 Hz

Certifications

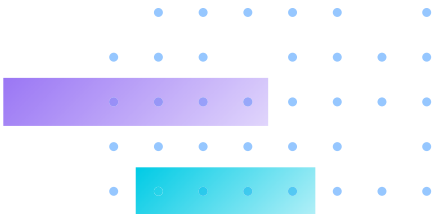
Certifications	UL, CE, UKCA, FCC, VCCI, LVD, ICES	UL, CE, UKCA, FCC, VCCI, LVD, ICES
----------------	------------------------------------	------------------------------------

Warranty

Warranty	24 months	24 months
----------	-----------	-----------

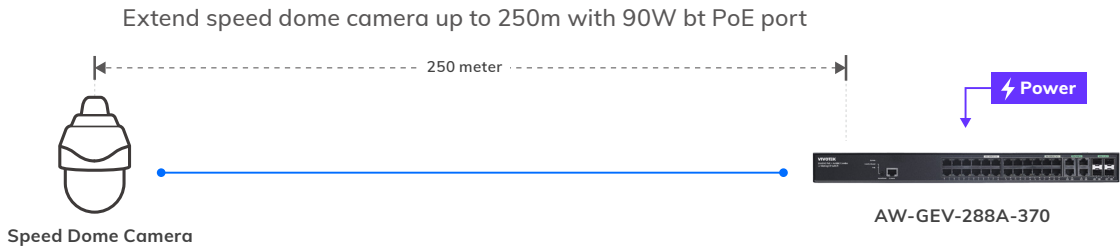
Accessories

Included Accessories	Power Cord, QIG, CD Manual, Rack Mount Kit	Power Cord, QIG, CD Manual, Rack Mount Kit
----------------------	--	--

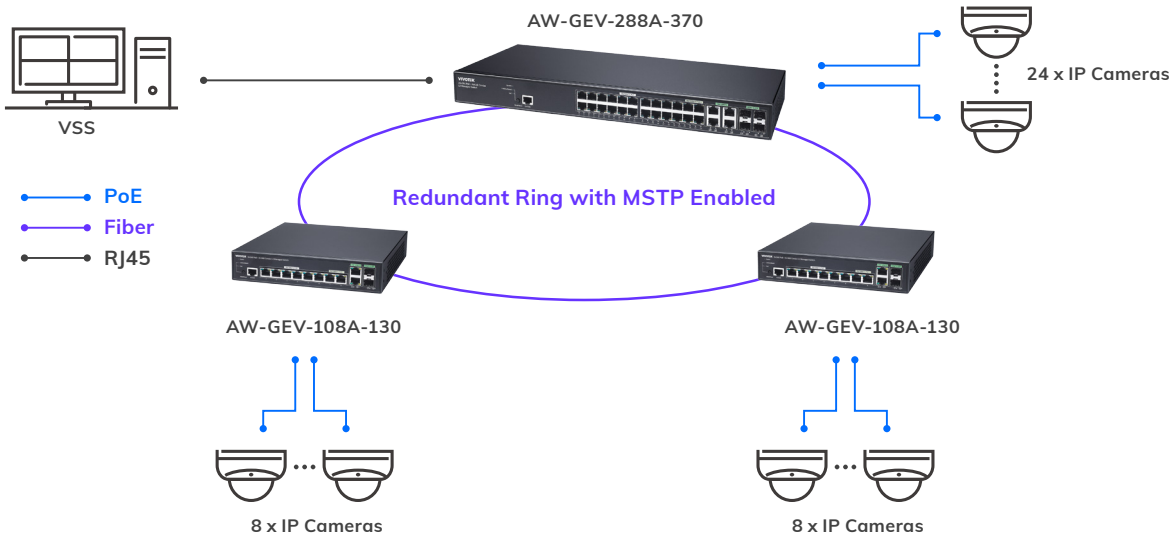


Application

• Extend PoE with 802.3bt 90W



• Redundant Ring with MSTP Enabled



Compatible Accessories

SFP Transceiver

SFP-1000-MM85-X5 1.25G, MMF, 0.5km	SFP-1000-MM13-02 1.25G, MMF, 2km	SFP-1000-SM13-10 1.25G, SMF, 10km	SFP-1000-SM13-40 1.25G, SMF, 40km	SFP-1000-CPTX-X1 1G SFP to RJ45

